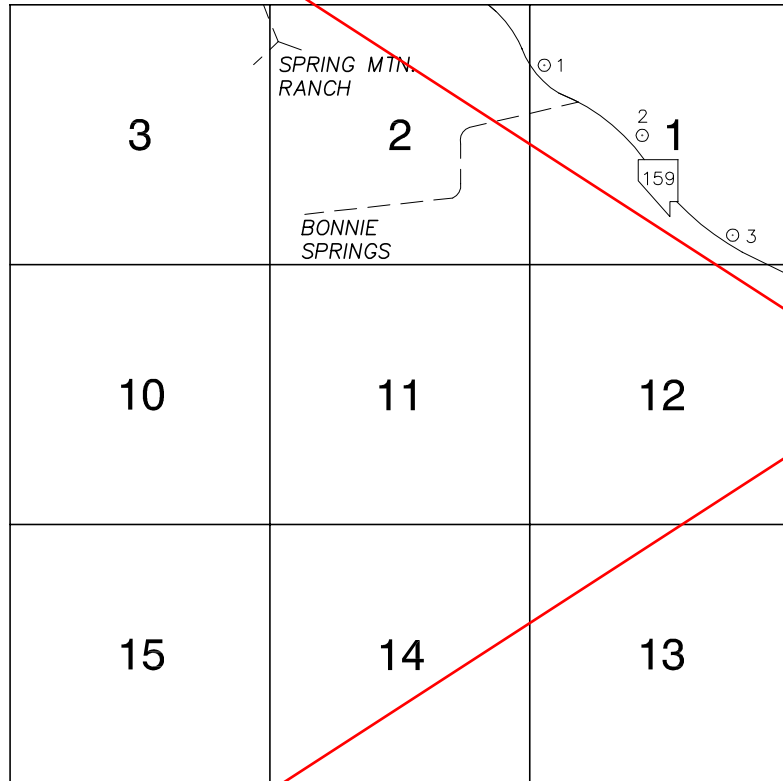


FOR REFERENCE ONLY

*2018 BENCHMARK NETWORK ADJUSTMENT SUPERSEDES THE 2003 BENCHMARK BOOK

Township 22 South, Range 58 East
Northeast Quarter



NORTH AMERICAN VERTICAL
DATUM OF 1988
- ALL ELEVATIONS IN METERS -

No.	STATION	ELEVATION (METERS)		DESCRIPTION
1	8C28 1NWW6 1998	1081.449	F N D	NDOT BRASS CAP IN CONCRETE, 50' EAST OF CENTERLINE OF STATE ROUTE 159, 300' NORTHWEST OF INTERSECTION OF BONNIE SPRING RD. AND S.R. 159. NDOT STATION E1 278+35.20 PT.
2	8C28 1C4 1998	1068.308	F N D	NDOT BRASS CAP IN CONCRETE, 50' NORTHEAST OF CENTERLINE OF STATE ROUTE 159, AT MILE MARKER 5. NDOT STATION E1 252+51.85 PC.
3	8C28 1SSE6 1998	1056.371	F N D	NDOT BRASS CAP IN CONCRETE, 60' NORTHEAST OF CENTERLINE OF STATE ROUTE 159, 1 MILE NORTHWEST OF INTERSECTION OF CASTALIA ST. AND S.R. 159. NDOT STATION E1 219+17.13 PT.
4				
5				
6				
7				
8				
9				
10				
11				

CLARK COUNTY VERTICAL CONTROL v.2003

CLARK COUNTY SURVEYOR'S OFFICE
5051 SOUTH PARADISE ROAD
LAS VEGAS, NEVADA 89119
(702) 455-0640

CONVERSION FACTOR:
METERS X $\left(\frac{3937}{1200}\right)$ = U.S. SURVEY FEET

REVISED 2003

SHEET
1 OF 1

22-58
NE